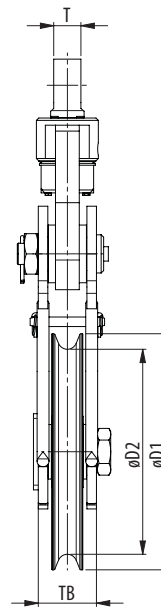
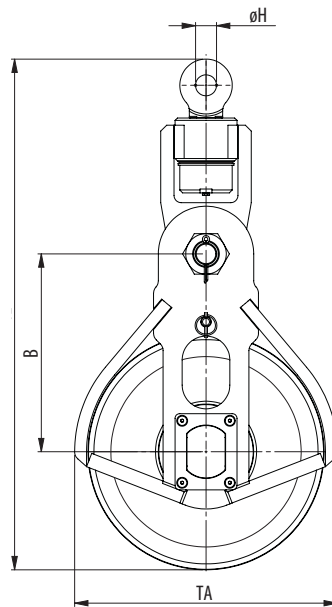
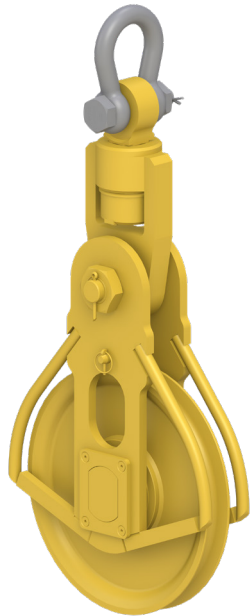


## HIGH CAPACITY LIGHT WEIGHT BLOCKS

## LIGHT WEIGHT TILT-UP BLOCKS



- Hook
- Clevis
- Tailboard
- Oblong eye

Model Nr.	WLL (Mtons)	For wire ød (mm)	Dimensions (mm)								Weight (kg)
			øD1	øD2	B	øH	T	TA	TB	TL	
HCLW 240.28.1.25.S	25	28	300	240	260	40	54	356	102	730	70
HCLW 290.32.1.25.S	25	32	350	290	285	40	54	406	102	780	80
HCLW 355.32.1.27.S	27	32	420	355	375	44	57	476	112	994	99
HCLW 355.36.1.27.S	27	36	420	355	375	44	57	476	112	993	99
HCLW 355.36.1.32.S	32	36	420	355	375	44	57	476	122	994	107
HCLW 430.32.1.27.S	27	32	495	430	415	44	57	551	112	1071	112
HCLW 430.32.1.32.S	32	32	495	430	415	44	57	551	122	1070	122
HCLW 430.38.1.32.S	32	38	495	430	415	44	57	551	122	1070	122
HCLW 430.38.1.40.S	40	38	495	430	415	52	70	551	122	1107	153
HCLW 520.38.1.55.S	55	38	595	520	485	59	80	651	132	1308	210
HCLW 520.44.1.55.S	55	44	595	520	485	59	80	651	132	1308	210
HCLW 520.52.1.55.S	55	52	595	520	485	59	80	651	132	1308	210
HCLW 630.58.1.81.S	81	58	710	630	575	73	100	776	152	1585	392
HCLW 760.70.1.100.S	100	70	900	760	735	86	120	980	200	1903	574
HCLW 760.76.1.125.S	125	76	900	760	735	86	120	980	200	1903	574

Minimum Ultimate Strength = 4 x WLL

WLL= Working Load Limit on head fitting.

- The dimensions in this table are indicative only. A drawing will always be submitted prior to production and will be the leading document when discussing dimensions.
- Blocks shown here are standard models; inquiries for custom versions are welcome.
- Refer to wire rope manufacturers D/d ratio guideline.



SEE OUR WARNING & SAFETY INFORMATION